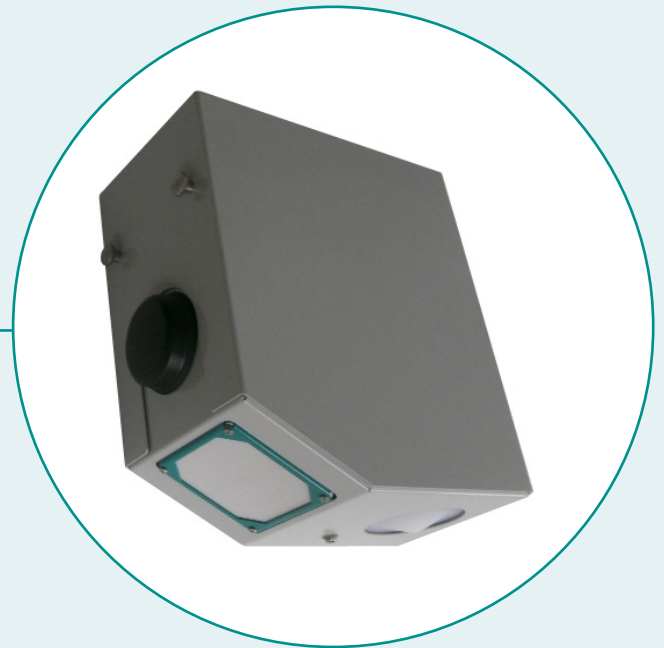


RQ-30

COMPACT SYSTEM

Contactfree discharge measurement as complete system with integrated data logger and GPRS / GSM communication.



Properties and benefits

- » Maintenance free
- » No structural construction in water needed
- » Fully operating even in flood water situation
- » Low power consumption allows solar cell instigation
- » Detection of flow direction
- » Measurement range from +/- 0.30 to +/- 15 m/s
- » Recognition of hysteresis effects
- » Measurement in back water situation
- » Measures also vegetal invasion
- » Measurement in tide dependent rivers
- » Integrated communication GPRS / GSM
- » Integrated data logger

Technical Data

| General | |
|--|--|
| Total weight | 19.5 kg |
| Protection | IP 66 |
| Accumulator capacity / voltage | 24 Ah / 12 V |
| Recommended solar panel for the middle latitudes | 20 W |
| Current consumption (active) | 150 mA (total system) |
| Current consumption (standby) | 3 mA (total system) |
| Operation temperature | - 20° ... 60° C |
| Lightning protection | Integrated lightning protection |
| Level measurement | |
| Level range | <ul style="list-style-type: none"> 0 ... 15 m - standard version 0 ... 35 m - extended version |
| Resolution | 1 mm |
| Accuracy | +/- 2 mm |
| Radar frequency | 26 GHz (K-Band) |
| Radar opening angle | 10° |
| Velocity measurement | |
| Range | 0.30 ... 15 m/s |
| Accuracy | +/- 0.02 m/s; +/- 1 % |
| Resolution | 1 mm/s |
| Direction recognition | +/- |
| Measurement duration | 5 ... 240 sec. |
| Measurement interval | 8 sec. ... 5 h |
| Measurement frequency | 24 GHz (K-Band) |
| Radar opening angle | 12° |
| Distance to water surface | 0.50 ... 35 m |
| Data communication module | |
| Supported networks | Quad band EGSM 850 / 900 / 1800 / 1900 MHz networks |
| Transmission power | Class 4 (2W) with 850 / 900 MHz Class 1 (1W) with 1800 / 1900 MHz |
| GPRS | Asynchronous, transparent, circuit-switched communication method up to 14.4 kbps Asynchronous, non-transparent, circuit-switched communication method up to 9.6 kbps |
| Data transfer | <ul style="list-style-type: none"> FTP server: CSV or xHydro format via ftp protocol MDS server: CSV format via http protocol. MDS server is a complete solution, including database, station- / user management and data visualization via web browser. |
| Data logger | |
| Storage | Up to 600,000 values |