

MINI-ADP®

ACOUSTIC DOPPLER CURRENT PROFILER

FEATURES AND OPTIONS

- Compact and light-weight
- Bottom-tracking for underway current surveys
- Directional waves
- Multi-sensor integration
- High resolution profiling

POWERFUL, ACCURATE and FLEXIBLE

If you are tired of buying multiple instruments for all your monitoring needs, then the SonTek ADP is the solution. SonTek's Mini-ADP is a powerful system that combines current profiling, multi-sensor integration, and wave measurement into a single compact package with a small transducer head.

SonTek's graphical software suite provides quick and easy understanding of your results both in the field and office.

With applications that span underway current surveys, nearshore deployments, benthic studies, or wave monitoring, the Mini-ADP is as robust and resourceful as you need it to be without sacrificing performance.

The Mini-ADP features a unique frequency-based pressure interface for high precision sampling, a small (10 cm) diameter transducer head, and a non-corrosive package that is easy to mount and transport.

So when you are looking for the best performance for your budget, the Mini-ADP is the obvious choice.

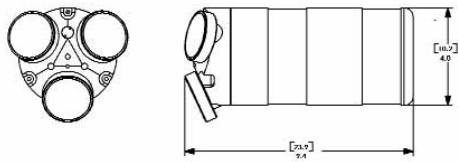
The light-weight and compact Mini-ADP is easy to deploy underwater or mount on a vessel.



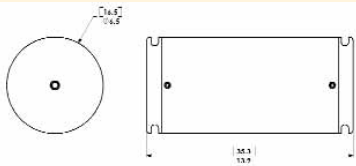
Integrate additional sensors for a total currents and water quality solution.



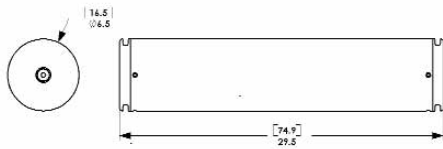
SPECIFICATIONS



Transducer Head (1.5 MHz)



Electronics Housing



Electronics & Battery Housing

Mini-ADP®

Frequency	Profiling Range Min - Max	Minimum Cell Size
1.5 MHz Mini	0.5 - 25 m (1.6 - 82 ft)	0.25 m (0.8 ft)
3.0 MHz Mini	0.3 - 6.0 m (1.0 - 20 ft)	0.15 m (0.5 ft)

Nominal range can vary depending on environmental conditions

Water Velocity

- Range ± 10 m/s
- Resolution 0.1 cm/s
- Accuracy $\pm 1\%$ of measured velocity, ± 0.5 cm/s
- Up to 100 range cells

Standard Features

- Compass/2-Axis tilt sensor (up/down)
- Flexible deployment control for reduced duty-cycle operation
- Internal recorder (127, 512 or 1000 Mb)
- Temperature sensor
- Battery pack for autonomous operation
- 3 m probe cable (longer cables available)
- 10 m power/communications cable (longer cables are also available)
- Delrin and fiberwound (plastic) housings
- Wet mateable connectors
- Titanium encased transducers with resistant epoxy coating
- Windows (95/98/NT/2000/XP) software for instrument setup, data collection, flow calculation and post-processing

Sensor Options

- SeaBird MicroCat CT (serial)
- D&A OBS turbidity (analog)
- Paroscientific quartz pressure sensor (0.01% accuracy) (frequency)
- Internal RPT gage pressure sensor (0.01% accuracy) (frequency)
- Strain gage pressure sensor (0.1% accuracy) (analog)

GLOBAL HEADQUARTERS

SonTek/YSI Inc.

6837 Nancy Ridge Drive, Suite A

San Diego, CA 92121

Tel: (1) 858-546-8327

Fax: (1) 858-546-8150

inquiry@sontek.com

www.sontek.com

SonTek and ADP are registered trademarks of SonTek/YSI, Inc, San Diego CA, USA.
Specifications subject to change without notice. SonTek/YSI is an employee-owned company.
Mini-ADP v1.0/05



3.0 MHz system

Optional Features

- Pulse-coherent profiling for high resolution over short ranges. Cell sizes from 1.6 cm (0.6")
- Bottom-tracking provides depth and track information during current surveys
- SonWavePro directional wave package
- RS422 output for cable lengths to 1500 m

Temperature Sensor

- Resolution $\pm 0.01^\circ\text{C}$
- Accuracy $\pm 0.1^\circ\text{C}$

Environmental

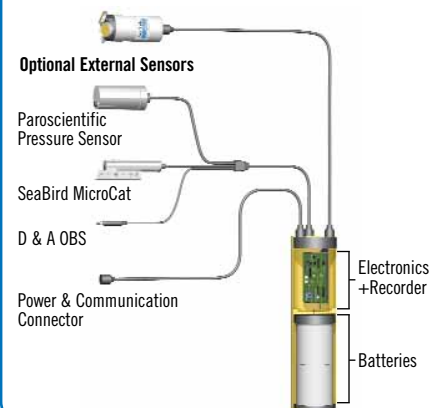
- Pressure rating: 500 m
- Operating temperature -5° to 40°C
- Storage temperature -10° to 50°C

Power Requirements

- Input power 12-24 VDC
- Power consumption 2.0-2.5 W Operating mode
- Total battery capacity (2 packs at 5°C): Alkaline 1200 Wh (20-25 days continuous operation)

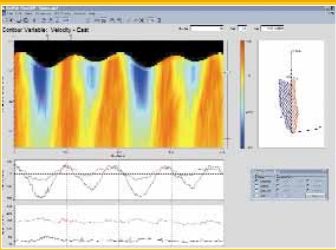
Note that external sensors consume additional power.

Mini-ADP with Integrated Compass/Tilt, Pressure and Temperature Sensors

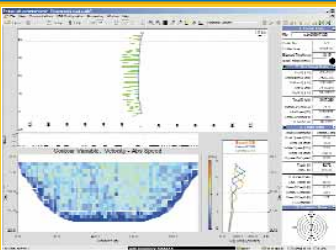


S O F T W A R E

Underwater Deployments



Current Surveys



Directional Waves

