



Non-Destructive Gold Assay & Karat ID

Get fast, accurate, analysis results with Olympus Innov-X Handheld XRF. Within seconds, DELTA handheld XRF provides alloy chemistry and karat classification with one non-destructive and non-intrusive test.

With the current high value of gold, quantifying its fineness and purity is more critical than ever. Whether importing precious metals, selling or producing jewelry, fabricating metal, or recycling scrap metal, you need a fast, highly accurate way to determine karatage (gold content) for quality control, pricing, and usage purposes.

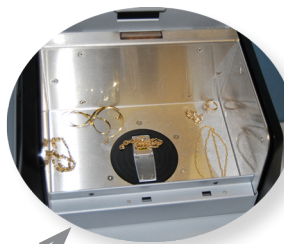
Olympus Innov-X's DELTA Classic handheld XRF analyzer not only provides these qualities, but is a non-destructive, cost-effective method to check for gold content and verify alloy chemistry.

XRF is a widely-used, proven and accepted method to generate a complete analysis of gold samples, including purity and fineness. On-the-spot analysis of your gold products and materials is an easy way to boost customer confidence and ensure dealer reliability.

Critical Applications

The DELTA Classic is ideal for the jewelry industry, museums, archaeological sites, pawn shops, coin collectors, cash-for-gold operations, scrap recycling.

- Certify Kt content on the spot, 0 - 24 K
- Platinum vs. white gold
- Silver and other metal content in gold
- Verify gold content in scrap gold
- Determine gold content in coinage



Optional hands-free WorkStation - provides optimal testing conditions for jewelry analysis. Includes PC software for benchtop-style analyzer controls.



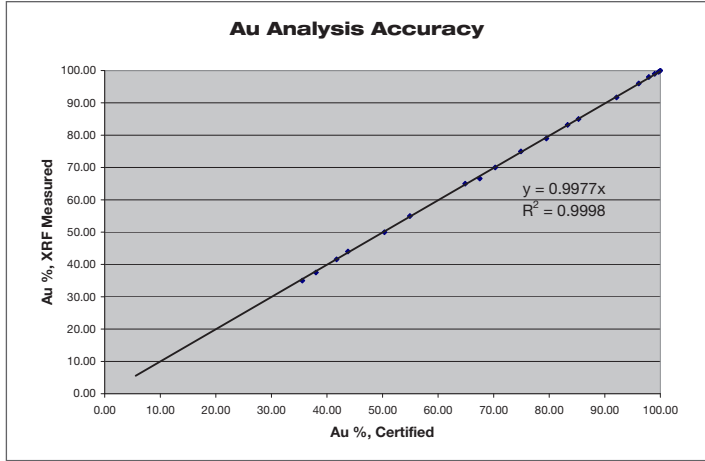
Features

- Powerful 4W X-ray tube provides reliable and accurate performance for gold analysis
- Speed – results within seconds
- High level of precision and accuracy – reliable results
- Completely non-destructive testing method
- Easily measures on uneven surfaces
- Automatic Karat determination
- Large data storage capacity for future reference
- Easy data export and reporting – generate immediate certification
- Optional integrated camera and small spot collimation for focused analysis and sample image archiving

Performance You Can Count On

In an economic environment where fast AND accurate results are more important than ever, the DELTA Classic handheld XRF provides superior precision and accuracy.

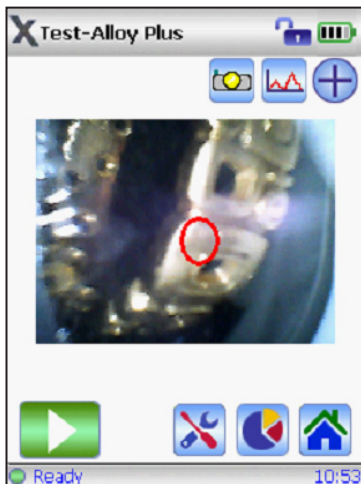
While you benefit from the convenience of easy, on-the-spot analysis with an Olympus Innov-X Handheld XRF, you can feel confident in results that will help assure maximum profit for your gold assets.



Repeat Analyses of Gold Alloys

DELTA Classic, 30 sec analysis time

| Standard | Reading No. | Karat | Au % | Au +/- |
|--------------------|-------------|-------|-------|--------|
| 54912 | #1-1 | 16.71 | 69.62 | 0.25 |
| | #1-2 | 16.73 | 69.71 | 0.25 |
| | #1-3 | 16.74 | 69.74 | 0.25 |
| | #1-4 | 16.75 | 69.78 | 0.25 |
| | #1-5 | 16.84 | 70.19 | 0.25 |
| Given Value | | | 70.00 | 0.07 |
| Standard Deviation | | | 0.22 | |
| 54909 | #2-1 | 20.46 | 85.26 | 0.27 |
| | #2-2 | 20.41 | 85.04 | 0.27 |
| | #2-3 | 20.45 | 85.20 | 0.28 |
| | #2-4 | 20.49 | 85.40 | 0.28 |
| | #2-5 | 20.45 | 85.23 | 0.28 |
| Given Value | | | 85.00 | 0.08 |
| Standard Deviation | | | 0.13 | |
| 54906 | #3-1 | 23.52 | 97.99 | 0.30 |
| | #3-2 | 23.53 | 98.03 | 0.30 |
| | #3-3 | 23.52 | 97.98 | 0.30 |
| | #3-4 | 23.50 | 97.93 | 0.30 |
| | #3-5 | 23.52 | 97.99 | 0.30 |
| Given Value | | | 97.99 | 0.07 |
| Standard Deviation | | | 0.04 | |



In Focus and On Target for Every Shot

The DELTA Classic is available with optional integrated camera and small spot collimation. A COMS camera records sample images to memory with analysis results for report generation. X-ray beam collimation is utilized for measurement of small components and samples. A simple press of a button activates 3mm diameter collimation; an on-screen indicator shows the operator exactly where the analysis spot is focused. Collimation can be easily reverted to 10mm spot diameter for standard, bulk analyses.

Gold...and More

In addition to gold, the DELTA Classic alloy analyzer provides a high level of performance for other precious metals of interest. The analyzer comes standard with a precious metals suite that includes Ag, Au, Pt, Pd, Ir, Rh, Ni, Pb, Cu, Zn, Fe, Co, and other elements.

X-Test-Alloy

11/02/10 #4-5

20.45 Karat

| ELEMENT | % | +/- |
|---------|-------|------|
| Cu | 6.96 | 0.06 |
| Ag | 7.81 | 0.06 |
| Au | 85.23 | 0.28 |

Ready 10:36

X-Test-Alloy

11/02/10 #3-5

8.54 Karat

| ELEMENT | % | +/- |
|---------|-------|------|
| Ni | 7.79 | 0.07 |
| Cu | 38.56 | 0.13 |
| Zn | 7.84 | 0.06 |
| Ag | 10.08 | 0.06 |
| Au | 35.59 | 0.19 |

Ready 10:33

OLYMPUS

OLYMPUS INNOV-X
100 Sylvan Road, Woburn, MA 01801, Tel.: 1-781-938-5005
OLYMPUS NDT
48 Woerd Avenue, Waltham, MA 02453, USA, Tel.: (1) 781-419-3900
12569 Gulf Freeway, Houston, TX 77034, USA, Tel.: (1) 281-922-9300

www.innovx.com

info@innovx.com

DELTA_Gold Au Analysis_010-11.10 - Rev 1 • Copyright © 2010 by Olympus Innov-X.
*All specifications are subject to change without notice.
All brands are trademarks or registered trademarks of their respective owners and third party entities.

CE

FSC
Mixed Sources
Product group from well-managed
forests, controlled sources and
recycled wood or fiber
Cert no. XXXXXXX
www.fsc.org
© 1996 Forest Stewardship Council